
ARIS Roadmap

ARIS Transformation Suite – Midterm Roadmap

ARIS Product Management (Dec. 2024)

ARIS

Disclaimer

Confidentiality and subject to potential change

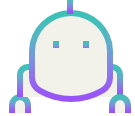
- The following document refers to planned functionality of ARIS for upcoming releases.
- Plans described in this document are subject to change; the document and its content reflect the current state of planning.
- If you want to be informed on the current state of planning, please contact ARIS Product Management.
- The following document is for Software AG customer or partner interaction purposes only; it is prohibited to forward the document to external parties that are not Software AG partners, customers or employees.

Introduction

What to expect in 2025

The way how business processes and their management are shaped will be affected by key trends

Technology



- AI & Autonomy: We'll see Agentic AI emerge, with technology handling more complex processes.
- AI & Governance: There will be an increasing need to govern the use of AI on transparency, fairness, accountability & reliability.
- Spatial Computing / Augmented: We will see an increase in anchoring digital contents with the physical world.

Sources: Gartner (1)

Process Intelligence



- Orchestrate: Process Intelligence will partner up more intensely with digital process automation, robotics process automation and other process tech.
- Knowledge Workers: AI/GenAI will help to drive to capture and share knowledge more effectively within organizations.

Sources: Forrester (2) (3)

What else?

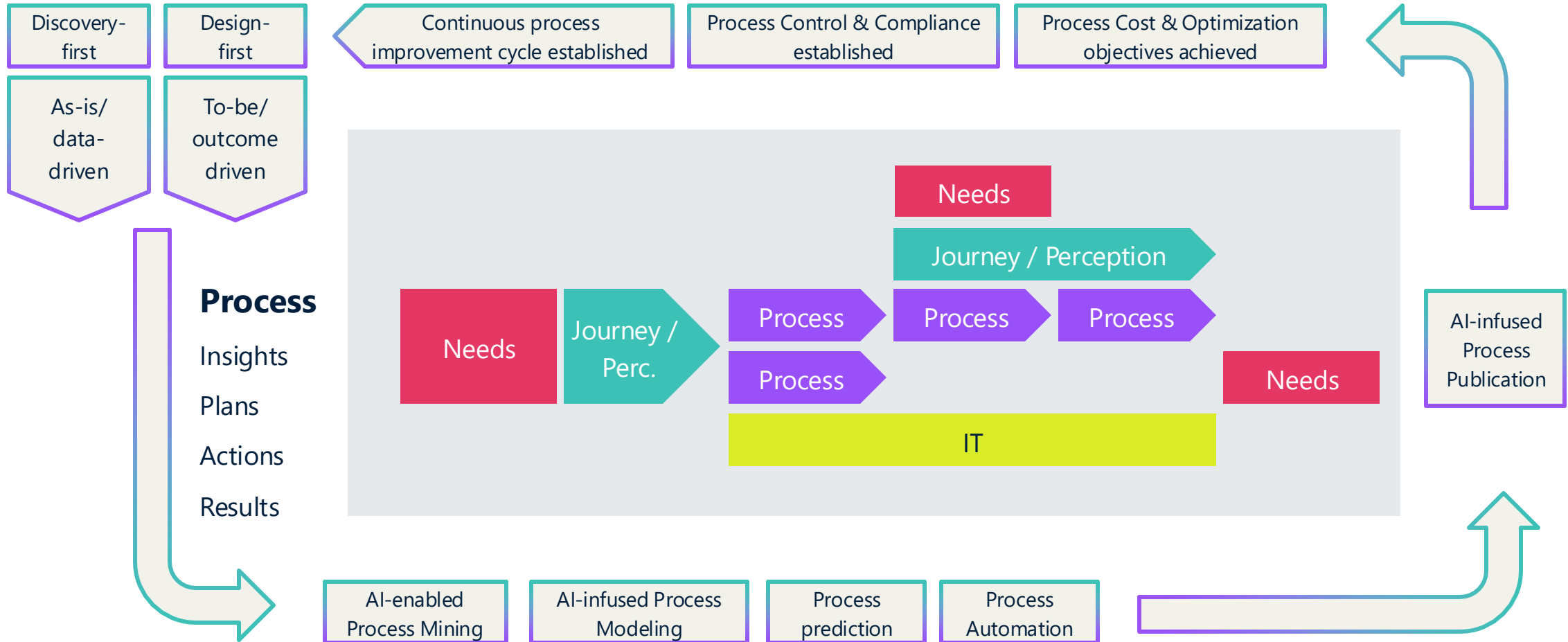


- BPM gets younger: Younger generations of buyers and users.
- Influencing factors: Younger buyers will include influencers and Gen AI in their decision processes.
- SaaS: The SaaS / cloud spends of companies will further increase.

Sources: Forrester (4), Gartner (5)

What to expect in 2025

Business processes make or break the experience



2025 predictions for ARIS customers

Strategic impact

- The **ARIS AI Companion** will boost productivity of BPM to a new level in the areas of Business Process Analysis, and Process Mining; additional use-cases will emerge.
- **Process prediction** with help to save costs and increase compliance: Fail early, fail fast by preventing heavy cost implementation of the wrong processes.
- **Process automation** will allow the implementation of governed processes.
- Industry-/use-case-driven **time-to-value accelerators** will speed up the adoption and value generation of Process Intelligence/BPM activities.

Tactical impact

- Customers will benefit from **community-driven improvements** in major products.
- More customers will work with **ARIS Software-as-a-Service** (ARIS cloud/SaaS) in public cloud or private cloud deployments.
- The **ARIS** product will offer valuable **new functionality** that drives TCO, and functional benefits of the platform.

Plans for 2025

Release strategy for 2025+

ARIS' product innovation will be made available at a higher cadence

2025 will offer up to **12 monthly releases** applicable for SaaS public, SaaS private cloud customers



Why?

Adoption of standard release cycle principles with faster feedback options due to earlier shipments.

Options?

Limited options available on shipping cadence in private cloud scenarios to meet special organizational needs (e.g., audit needs).

Shipment cadence:

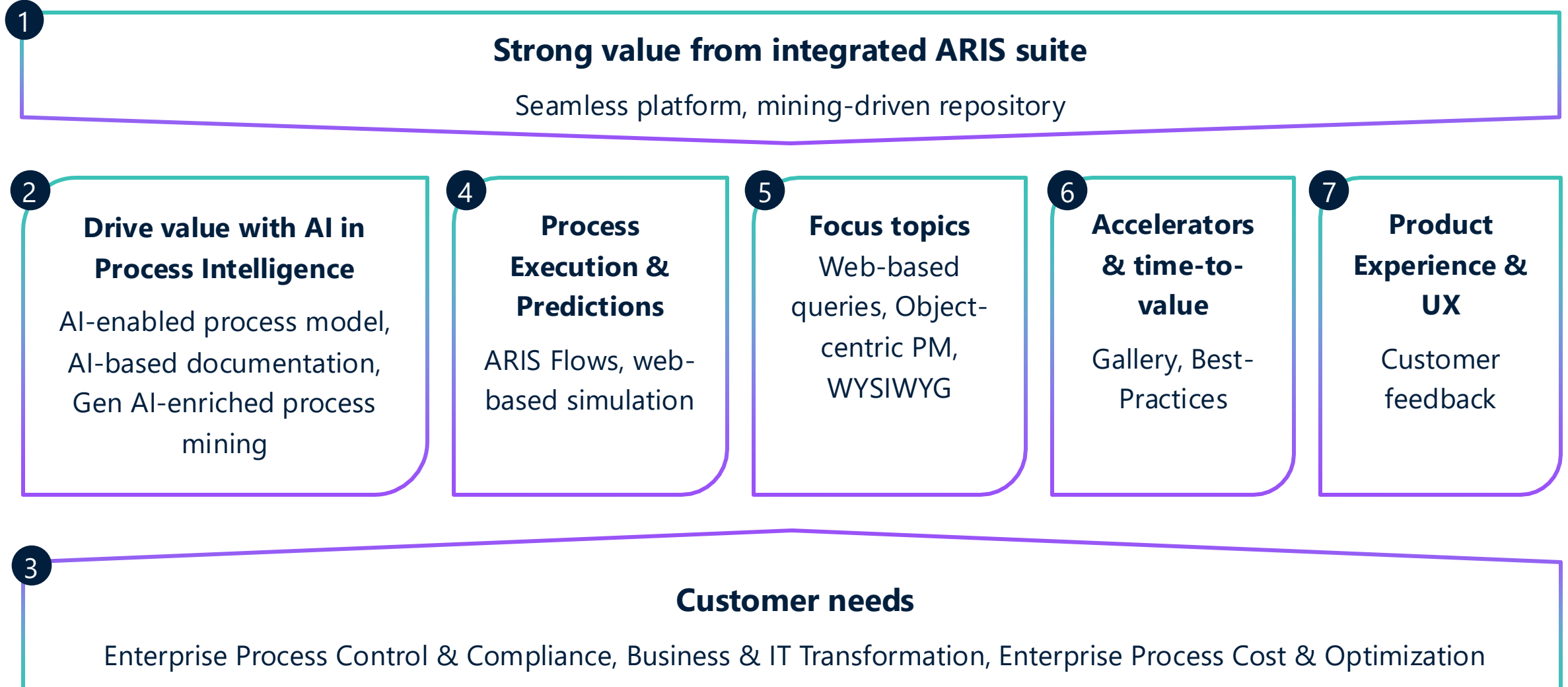
- SaaS public: monthly
- SaaS private: monthly/half-yearly (YYYY.4/10)
- On-prem: yearly (YYYY.10)
- On-prem 2025: additional 2025.4 release

What else?

More continuous releases mean continuous flow of innovation in more digestible chunks.

ARIS Roadmap

Focus areas for 2025



Artificial Intelligence

ARIS AI Companion

HIGHLIGHT

ARIS Published content

Enter search term here

GroupsCatalog

Enterprise process map

OverviewDiagramDashboardsTasksDocumentsConfirmations

Enterprise process map

Value-added chain diagram

Oct 1, 2018, 11:02:01 PM

powered by ARIS

Management processes

Strategic planning

Budgeting & controlling

Operational management

Risk & compliance management

Business process management

Core processes

Research & development

Production

Logistics

Customer services

Procurement

Marketing & sales

Financial services

Support processes

Human resource management

Finance

Legal

Communication & information management

Facilities management

Companion Beta

Which processes are relevant for a regional sales admin?

Sources: United Motor Group

Sales order processing (as-is) 1 Process

Regional sales organization 2 Orgchart

Sales order processing (to-be) 3 Process

+3

The relevant processes for a regional sales administrator are as follows:

1. Sales Order Processing (as-is BPMN) - This process involves checking sales contracts and customer master data, vehicle provisioning, and order placement. The regional sales administrator plays a crucial role in various functions such as checking customer data, allocating vehicles, and creating sales orders.

Reference: Sales order processing (as-is BPMN) 1.

2. Sales Order Processing (to-be) - Similar to the as-is process, this version also involves checking contracts, customer data, and vehicle availability, with the regional sales administrator responsible for allocation and order creation in SAP.

Reference: Sales order processing (to-be) 3.

3. Commission Calculation - This process includes managing the commission

ARIS AI Companion (updates in 2025)

AI leveraged to design, reuse and share high quality processes with deep insights on performance indicators.

Process Automation & Governance

ARIS Flows

HIGHLIGHT

Overview

Flows summary

- 18 Flows
- 10 Form templates
- 10 Flows published
- 6 Published flows with changes pending
- 2 Flow drafts

Learn more

To learn more about how to build flows, you can use the following resources.

- ARIS Flows Cheat sheet
- ARIS Flows Documentation

Create new flow

Create flow with AI comp

Recent flows

Read only

ARIS Flows (new product in 2025)

AI-enabled workflow editor (no-code) to create and adapt new governance workflows for ARIS content.

Predictive Process Management

Web-based Process Simulation

HIGHLIGHT

Scenarios

- Base
- To-be process

Calendars

OUTPUT

Runs 6

Experiments 1

ANALYSES +

▼ Bottlenecks

Key metrics

Throughput time

Dynamic waiting times

Waiting tokens

Utilization of resources

Activities and resources



Scenarios

2 scenarios set up



Runs

6 runs available



Analyses

1 analysis configured

Analyses



Throughput time

Longest · 1.9 hr

Shortest · 1.4 hr



Utilization

Highest · 113 %

Lowest · 99 %



Cost

Highest · €102k

Lowest · €85k

Description

The goal of this simulation project is to find and eliminate the bottlenecks in the process "Billing (car rental)". Ideally the average throughput time should be reduced by at least 10%. The utilization of the involved resources should roughly stay the same.

[Show more](#) · [Edit](#)

Storage quota





98% used (4.9 of 5 GB)





Web-based Simulation (new product in 2025)


Leverage the power of prediction and simulation to define and analyze business processes before implementation.

ARIS Roadmap Details (HY1-2025)

Please access via <https://ariscommunity.com/user/login?destination=/product-roadmap-release-planning>

Workspace	Q1-2025	Q2-2025	Q3-2025+
<div> ARIS Enterprise - Admin</div>		<div>Harmonized administration of standard workflows</div> <div>Data sync and data import from 3rd party systems</div>	<div>Versioning of scripts</div>
<div> ARIS Enterprise - Designer</div>		<div>Attributes containing multiple values</div> <div>AI-based modelling to consider repository content</div> <div>Enhancements for Customer Journey Mapping</div> <div>Inherit model attribute values within a hierarchy</div> <div>TOGAF 10 compliance</div>	
<div> ARIS Enterprise - Viewer</div>	<div>Keep defined column width in tables of ARIS portal</div>	<div>AI-based search: part III</div> <div>More formatting options expand the flexibility to layout the home page</div> <div>Edit toolbar of portal is fully configurable</div> <div>Select object in model when comment is selected in Collaboration</div> <div>Use WYSIWYG editor to configure the Catalog view</div> <div>Apply preset filters on portal search results to enhance relevance and boost engagement</div> <div>New Enterprise Search - find content from the "Documentation" tab</div> <div>Shape your own navigation experience</div>	
<div> ARIS Enterprise - Viewer PRO</div>		<div>ARIS Search as an input type for Dashboards</div>	

Workspace	Q1-2025	Q2-2025	Q3-2025+
<div> ARIS Enterprise - Server/Enterprise Server</div>	<div>ARIS Flows - pre-MVP</div>	<div>Accelerator exporter for BPA Gallery</div> <div>AI-enabled how do I</div> <div>ARIS Flows - MVP</div> <div>Bring AI-enabled workflow design to all ARIS editions with GA</div> <div>Content type configuration using XML</div>	<div>Fast track the publication of editorial changes</div> <div>Make available improved standard workflows for all ARIS editions</div> <div>Make changes on migrated governance workflows</div> <div>Multi-level standard approval workflow</div> <div>Release collections of ARIS contents</div> <div>Change project room ownership</div> <div>(BPA) Dashboards on the ARIS Gallery</div>
<div> ARIS Extension: Risk & Compliance</div>		<div>Enable to define a specific time span for reviewing tasks (questionnaire, risk).</div> <div>Manage renaming of ARIS databases in R&C usage</div> <div>Improve management of R&C environments and roles</div> <div>Risk and Compliance Admin - ARIS report buttons at forms and lists</div> <div>Risk and Compliance SSC to reduce customizing migration effort - configurable 2, 4 or 6 eyes principle</div> <div>Risk documentation and mapping without modeling</div>	
<div> ARIS Extension: SAP Solution</div>	<div>Enable update of BPMN models and SVG in SAP Cloud ALM</div>	<div>ARIS - SAP Cloud ALM: Simplify synchronization by addressing a single SAP destination as standard</div> <div>Simplified start of SAP transaction start in web</div>	
<div> ARIS Extension: Simulation</div>		<div>MVP for ARIS Simulation in the web</div>	

Workspace	Q1-2025	Q2-2025	Q3-2025+
<div> ARIS Process Mining SaaS</div>	<div>Consistent Time Format in Process Explorer</div> <div>Threshold in app components</div>	<div>Transfer attributes and derived probabilities from Mining into ARIS models (e.g. for simulation purposes)</div> <div>EPC support for the conformance check</div> <div>Additional SQL/VCC functions</div> <div>[MVP] Object-centric process mining in ARIS</div> <div>Companion: Ad-Hoc KPI Calculation and enhanced answer quality</div> <div>New out of the box app & metrics - bottleneck/anomaly insights</div> <div>Generic output API</div>	<div>Transformation Cockpit / Manager</div> <div>Show BPA attributes in Process Mining</div> <div>Mining to Model 3.0 aka Decision Mining</div> <div>New App "Quick Insights"</div>



Outlook

How will Business Processes Management evolve?

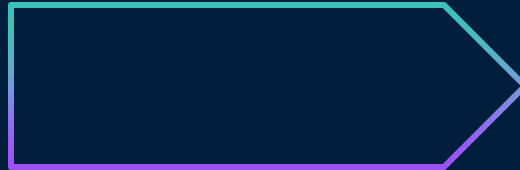
What if...



Processes and their management run much more **autonomous** in the future?



Managing processes truly becomes **democratized**?

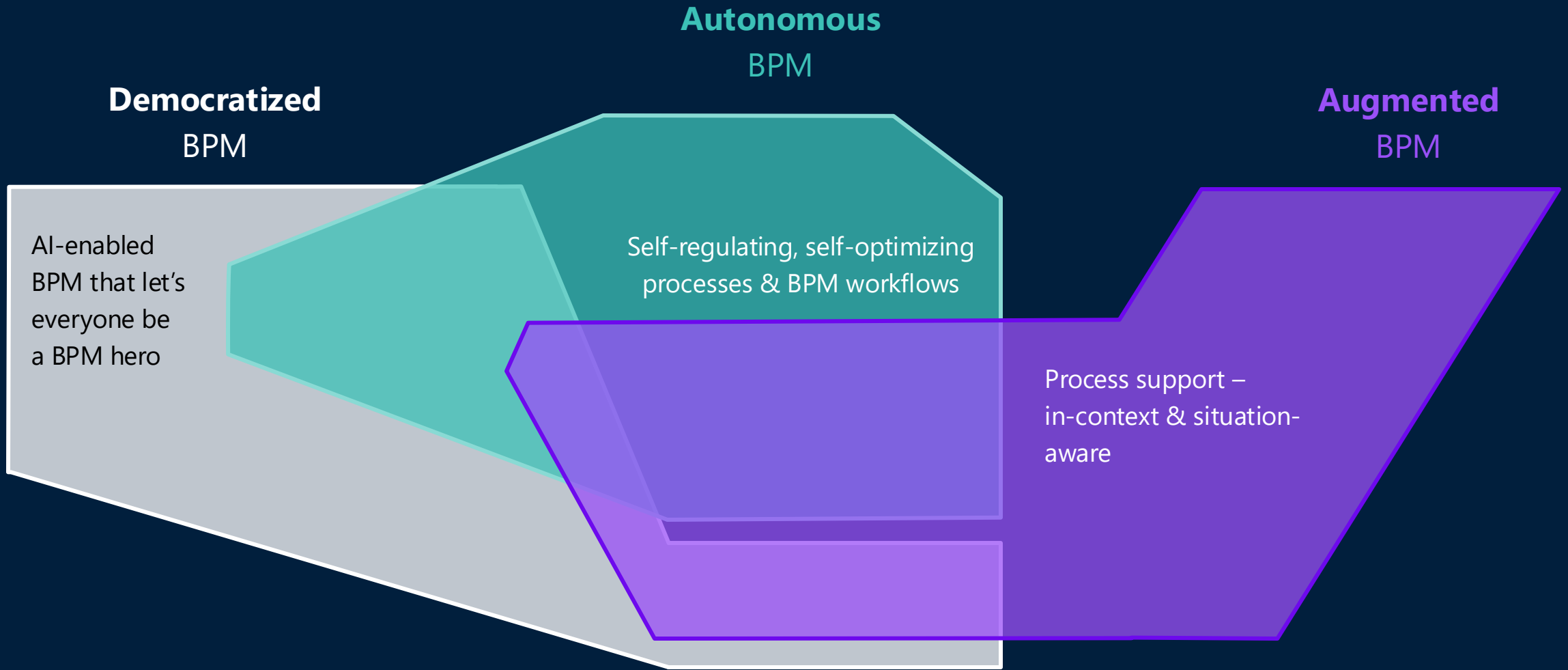


Knowledge about processes beams into context, **augmenting** process reality?



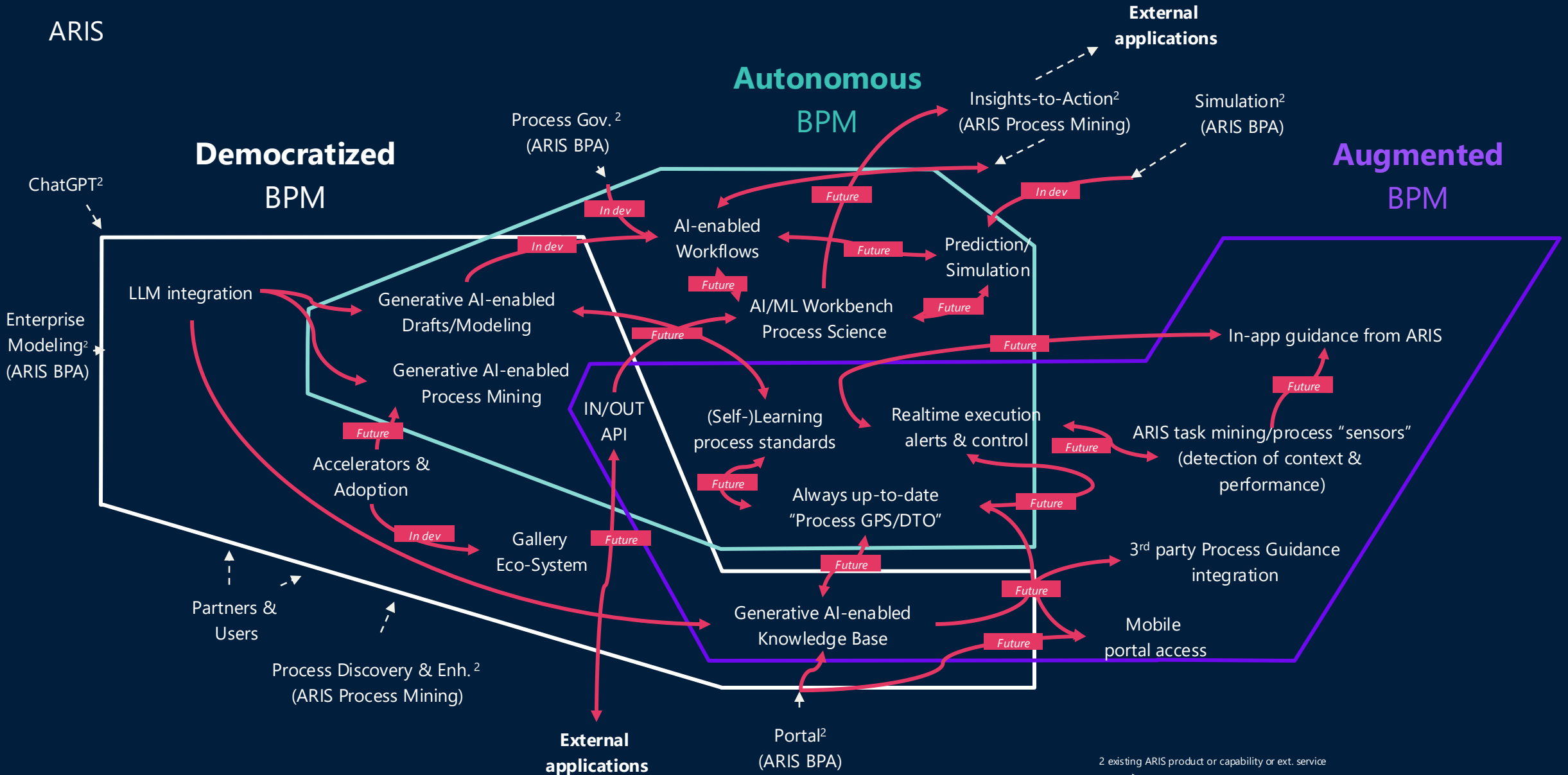
North Stars¹

ARIS



North Stars¹

ARIS



² existing ARIS product or capability or ext. service

--- existing integration

→ developed added-value integration

The new ARIS Ideas Portal

ARIS Idea Portal Migration

Exciting News: ARIS Idea Portal Migration!

- **New Aha Instance:** All ideas, votes, and comments have been migrated. The portal will be public by February 12, 2025
- **Access the New Portal via the :** <https://aris.ideas.aha.io/>

What Stays the Same?

- Create new ideas
- Vote on existing ideas
- Comment on existing ideas
- Track the progress of your ideas
- All migrated ideas, votes and comments will remain associated with their original users

What is new in the new ARIS Idea Portal

What's New?

- To enhance security and protect proprietary information, the idea portal is now private. This means you must be logged in to work with the Ideas Portal.
- We have added Single-Sign-On to the ARIS idea portal via the ARIS Community. That means, you can use your ARIS Community credentials to sign into the Ideas Portal.
- A comprehensive guide on how to log in to the new ARIS Ideas Portal will be provided to all previous users of the ARIS Ideas Portal via e-mail, once it is public

Important Note

- Some statistics, especially for merged ideas, might not fully reflect the previous instance.
- Ongoing clean-up and maintenance will be performed.
- A comprehensive

ARIS